



# Greenplate Inbench Electric BBQ - User Manual

# CONTENTS

## Table of Contents

<i>Introduction</i>	1.1
<i>Component List</i>	1.2
<i>BBQ Product Features</i>	1.3
<i>Electrical Information</i>	1.4
<i>Important Installation Requirements</i>	2.1
<i>Inbench Electrical BBQ Drawing</i>	2.2
<i>BBQ Installation Drawing</i>	2.3
<i>Inbench Electric BBQ Start Up Sequence</i>	3.1
<i>Instructions for Operation</i>	3.2
<i>Inbench Electric BBQ Instruction Labels</i>	3.3
<i>Instructions for Temperature Module</i>	3.4
<i>Inbench Electric BBQ Temperature Module Drawing</i>	3.5
<i>Dipswitch Settings</i>	3.6
<i>Cleaning of Inbench Electric BBQ</i>	4.1
<i>Electrical Maintenance</i>	4.2
<i>Inbench Electric BBQ Power Up Codes</i>	5.1
<i>Inbench Electric BBQ Faults and Diagnosis</i>	5.2
<i>Inbench Electric BBQ Wiring Diagram</i>	5.3
<i>Warranty Policy Statement</i>	6.1
<i>Procedure to Initiate Warranty</i>	6.2
<i>Quality Assurance Dispatch Checklist</i>	6.3

# 1 PRODUCT INFORMATION

## Introduction

1.1

Congratulations on the purchase of your new Greenplate Inbench Electric BBQ, upon arrival inspect the product for concealed damage. Immediately report any damage to Greenplate or Greenplate Agent.

## Component List

1.2

### Inbench Electric BBQ Component List:

<i>Toroidal Transformer (1800 Watt)</i>	<i>EB0001</i>
<i>Stainless Steel BBQ Cook Plate</i>	<i>EB0002</i>
<i>Plate Component Set (Includes: Mica Paper x 2, 25mm Fiber Frax Durablanket x 2, Mill Board &amp; Lytherm Paper)</i>	<i>EB0003</i>
<i>Push Button Switch &amp; Cable</i>	<i>EB0004</i>
<i>Pigtail Connection for Push Button Switch</i>	<i>EB0004PT</i>
<i>GP V21 Printed Circuit Board</i>	<i>EB0005V21</i>
<i>15Amp Ceramic Fast Blow Fuse</i>	<i>EB0005F15A</i>
<i>AC Power Lead (1.2m)</i>	<i>EB0006ACL</i>
<i>Black &amp; White Cable Loom (Heat Sensor Wires)</i>	<i>EB0006BWL</i>
<i>Stainless Steel Threaded Drainpipe</i>	<i>EB0007</i>
<i>Red Silicone Rubber Washer</i>	<i>EB0007RSR</i>
<i>Mica Paper (2 Sheets Per Set)</i>	<i>EB0009MICA</i>
<i>Drainpipe Washer Set</i>	<i>EB0010</i>
<i>BBQ Element</i>	<i>EB0011</i>
<i>Weicon Silicone HT 300-310ml</i>	<i>EB0019</i>
<i>Red Silicone Gasket</i>	<i>EB0030</i>
<i>K-Type Thermocouple</i>	<i>EB0060</i>
<i>Digital Temperature Module</i>	<i>EB0061</i>

## Inbench Electric BBQ Component List:

<i>Ceramic Insulator Female</i>	EB0011CIF
<i>Ceramic Insulator Male</i>	EB0011CIM
<i>15L White Plastic Fat Bucket</i>	EB0042
<i>High Temperature Fat Bags (10 Per Pack)</i>	EB0040
<i>Stainless Steel Hold Down Bracket</i>	EB0022

## BBQ Product Features

## Inbench Electric BBQ Product Features:

*Innovative 24V Heating Element*

*Premium 2.5mm 443 Stainless Steel Hot Plate*

*Red & Green LED Push Button Switch*

*Adjustable Cooking Temperature 50°C - 320°C*

*Audible ON/OFF Tones*

*6 Second Hold to Start Child Saftey Feature*

*Digital Temperature Display and Cycle Counter*

## Electrical Information

## Inbench Electric BBQ Electrical Information:

*Power Supply: 200/230 VAC | 50/60 Hz Self Selecting*

*Element: 1800 Watts/7.8 Amps*

*ESO Approval #: SAA172029*

*Patent #: 761137*

*Conformant to AS/NZS 60335.1-2011+A1 Standards for General Electrical Appliance Saftey*

## 2 INSTALLATION INFORMATION

### Important Installation Requirements

2.1

□ Correct wiring of the Greenplate® Barbecue is essential. Incorrect installation will void the Warranty. Each Greenplate® barbecue plate must have its own 10 amp circuit with a 20 amp RCBO C-Curve type A. Having a rated residual operating current not exceeding 30mA in the sub-board, as per AS3000.2018 standard requires a minimum of 2.5 mm<sup>2</sup> cabling for each unit for longer runs larger cabling will be required. If unsure contact Greenplate Pty Ltd service on 07 3245 3008. An Australian approved 3 pins, 10 amp electrical lead is supplied with the BBQ. All electrical work must be carried out by appropriated electrical licenced personnel in accordance with the National wiring rules.

□ Unit must be installed in a weather proof enclosure to IPX4 or equivalent, minimum 50mm clearance around electrical housing is required. Please protect barbecue plate and benches from industrial fallout during any construction as rust from filings or chemicals will not be covered under warranty.

□ Benches not supplied by Greenplate Pty Ltd must be adequately cross ventilated. Ventilate bench to allow free air flow through cabinet. Failure to ventilate the bench can result in premature failure of equipment, this is not covered under warranty. Cross Ventilation area of 0.035m<sup>2</sup> required. All Greenplate® benches are pre-fitted with adequate ventilation.

□ Cut square hole into bench top where desired (490mm x 490mm). Carefully lower Greenplate® 300 BBQ unit into opening. Install hold down U bracket, threaded drain pipe and washers as per (Figure 2.3.). Position On/Off push button switch to your desired location (19 mm hole). Install BBQ switch and instruction label to outside of bench. (Note: safety labels are a legal requirement in public spaces). If bench/cabinet is deeper than the thread of the switch, routing out the back of the bench where switch is to be fitted to 40 mm is required. This will allow the nut to thread onto the back of the switch and for the connection of the switch to the cable.

□ Ensure appropriate grease collection bin and bag (supplied) is placed under the drain tube.

□ Plug BBQ lead into power point having an earth contact (10 amp, 230 VAC) and turn ON (at wall only). Set temperature module to your required temperature, 320°C is recommended, for general use.

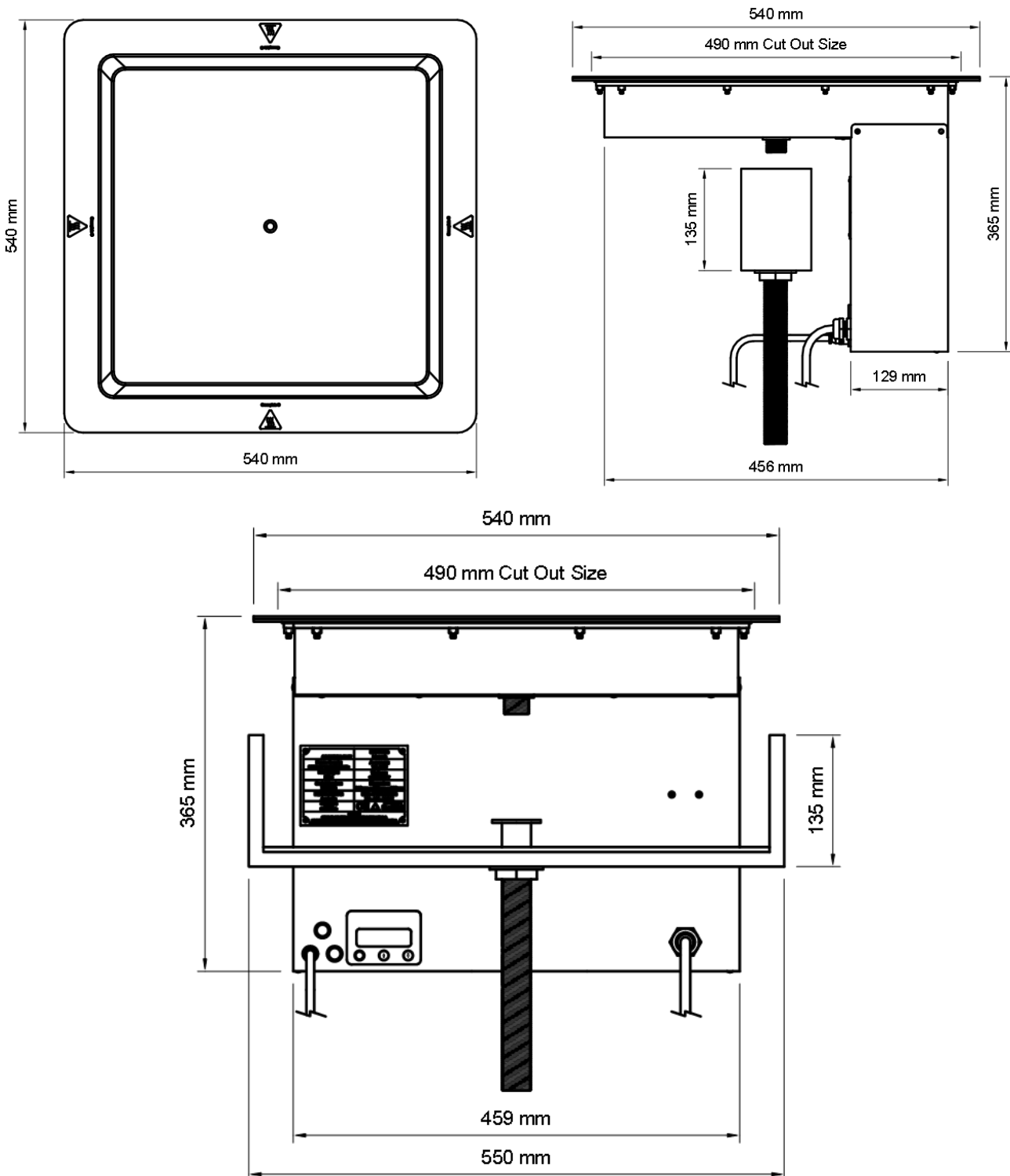
□ Switch on mains power, after 5 seconds the BBQ will beep once for thermocouple mode. Push and hold the switch for 6 seconds to start the BBQ. A buzzer will sound once and the push button switch will light red indicating that the BBQ is heating and green when desired cooking temperature is reached. The timer is preset to switch off the barbecue after 28 minutes. To stop barbecue during cycle press and hold the switch for 5 seconds the BBQ will beep 3 times identifying the shutdown end of cooking cycle.

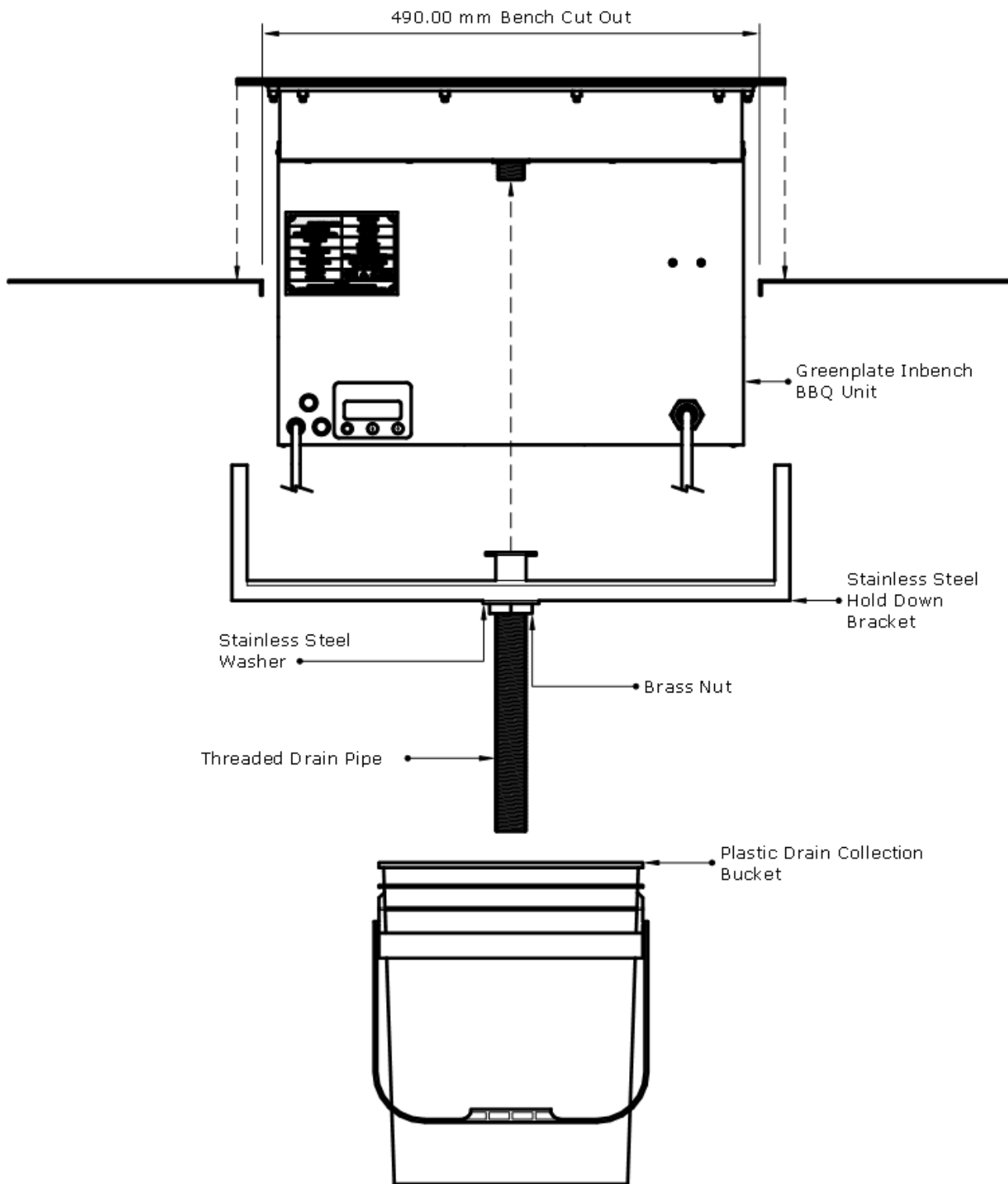
□ Clean the plate prior to use with warm soapy water to remove any dirt and for safe hygienic cooking. Ensure the plate is cleaned regularly to maintain its appearance and longevity. Greenplate also can supply BBQ cleaning kits upon request.

□ This appliance is not intended for use by persons (including children) with reduced physical, sensory or mental capabilities, or lack of experience and knowledge, unless they have been given supervision or instruction concerning use of the appliance by a person responsible for their safety. Children should be supervised to ensure that they do not play with the appliance.

**WARNING:** Charcoal or similar combustible fuels must not be used with this appliance

# Inbench Electric BBQ Drawing





# 3 OPERATION & FUNCTIONS

## Inbench Electric BBQ Start Up Sequence 3.1

### BBQ Initial Start Up:

- Plug in/Switch on mains power to the BBQ unit.
- 5 Seconds after applying mains power to the BBQ unit, the unit will beep once indicating the dipswitches are set to Thermocouple Mode. All New BBQ's are sent out with the setting as standard.
- BBQ unit will now sit in idle, until the BBQ Push Button Switch is pressed to start a cooking cycle. If any lights are flashing on the Push Button Switch prior to the Push Button Switch being pressed, review section 5 Diagnostics and find the correlating fault that is displayed.

## Instructions for Operation 3.2

### BBQ Cooking Cycle Instructions:

- Press to start or Press and Hold BBQ Push Button Switch for 6 seconds.
- BBQ unit will sound one Beep and a GREEN light will illuminate on the BBQ Push Button Switch
- Switch will then turn RED indicating that the BBQ is heating up
- Once the BBQ has reached the set temperature the Push Button Switch will change to GREEN.
- BBQ will run through a preset 28 minute cooking cycle.
- Once the cooking cycle is complete, the BBQ will beep three (3) times indicating the end of the cycle. The unit will then automatically shut off.

## Inbench Electric BBQ Instruction Lables 3.3

### Greenplate Red/Green & Blue/White Instruction Labels:

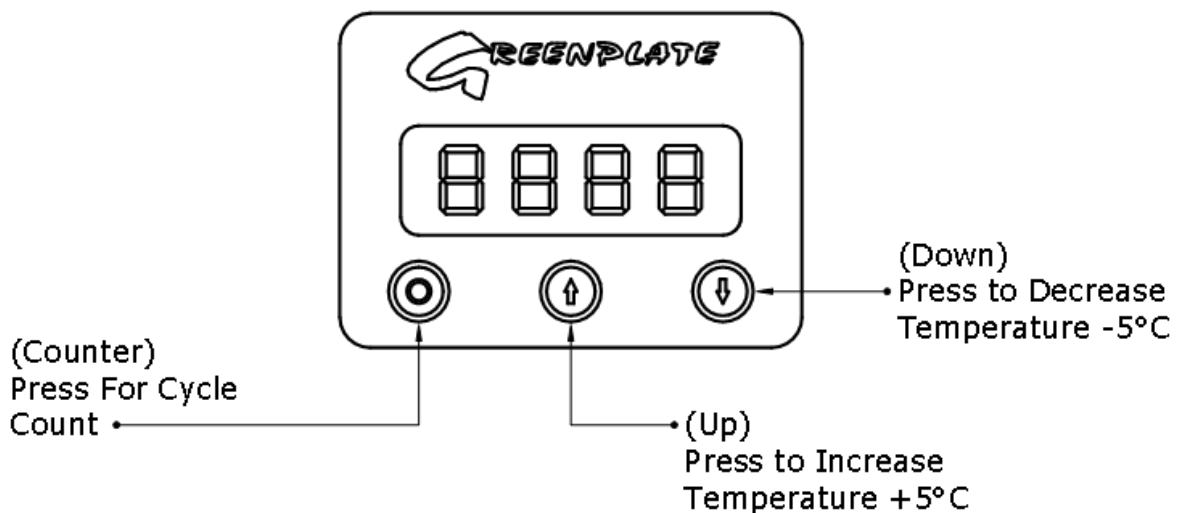
The image shows two rows of instruction labels for the Greenplate BBQ. Each row includes the Greenplate logo, a warning icon, and five circular icons with text:

- IF LIGHT IS FLASHING PRESS TO RESET BBQ IF BBQ DOES NOT RESET CONTACT SERVICE PROVIDER
- PRESS OR HOLD 6 SEC
- BBQ HEATING UP
- READY TO COOK
- AUTO SHUT OFF 28 MIN TO SHUTDOWN BBQ HOLD BUTTON FOR 5 SECONDS



**BBQ Temperature Module Operation Instructions:**

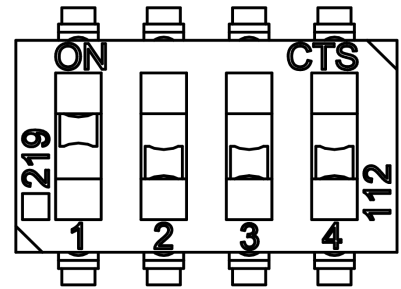
- Press the Counter Button to display the BBQ cycle count.
- If you Press and Hold the Counter button it will reset the BBQ cycle count to Zero (0).
- Press the Up Button. This will increase the temperature set point by 5°C.
- Press the Down Button. This will decrease the temperature setpoint by 5°C.
- Pressing either the Up or Down Button once will show you the current temperature set point, after this is displayed the screen will then change and display the ambient temperature at the cookplate.

**Inbench Electric BBQ Temperature Module Drawing:**

The Greenplate Inbench Electric BBQ gives the customer the ability to select different modes of operation via the positions of the Dipswitches located on the BBQ Printed Circuit Board (PCB). From factory the BBQ is preset to the 6 Second Delay Start feature. The below Dipswitch diagrams outline the different settings available. For clients wishing to utilise a key start or coin mechanism it is best to use the Continuous Operation setting.

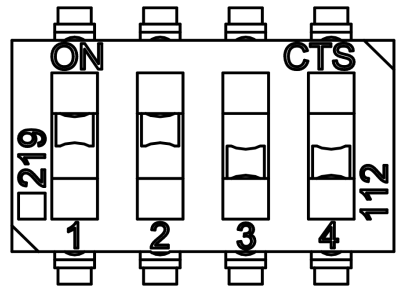
### Push to Start Option:

- Dipswitch 1 needs to be set in the ON position. Dipswitches 2, 3 and 4 are to be set in the OFF position
- This feature will require the user to start the BBQ by pushing the BBQ Switch once.



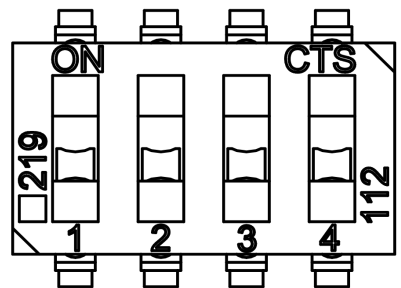
### 6 Second Delay Option:

- Dipswitches 1 and 2 need to be set in the ON position. Dipswitches 3 and 4 need to remain in the OFF position.
- This feature will require the user to push and hold the BBQ Switch for 6 seconds before the BBQ will start.



### Continuous Operation Option:

- All dipswitches are to be set in the OFF position.
- This removes the On/Off function of the BBQ switch, the BBQ will start as soon as power is applied. The switch will still show the red and green LEDs indicating Heating/Temperature Reached.



### Please Note:

- When changing the dipswitch settings please ensure the BBQ unit has been depowered.
- After changing the dipswitch settings, apply power to the BBQ unit and wait 10 seconds before pressing the Push Button Switch allowing the Printed Circuit Board to process the change of setting.
- All electrical works or inspections are to be carried out by Qualified Personnel Only. Routinely inspect and test all power leads as per regulations.

## 4 CARE & MAINTENANCE

### Cleaning of Inbench Electric BBQ

4.1

#### Routine Cleaning Instructions:

- Warm the plate and clean with soapy water and a scourer, stubborn baked on food may be removed with a scraper and/or fine wet and dry sandpaper.
- Clean the drainpipe regularly and empty the supplied grease bags frequently to prevent odours.
- High pressure cleaning of electrical appliances is not recommended, especially inside of the benches.

Cleaning Kits and High Temperature Grease Bags are available for purchase through Greenplate and its Distributors.

For 'Tea' staining removal we recommend a product called "Quickleen-S Multi-Purpose Cleaner". Available from Greenplate or alternatively from Quickleen directly.

Website: [www.quickleen.com.au](http://www.quickleen.com.au)

- In areas of high pollution or salt spray we recommend using the product on a regular basis of every three (3) to six (6) months to ensure maximum appearance retention of the BBQ unit.

### Electrical Maintenance

4.2

#### Six Monthly Inspection:

- Check barbecue switch leads for damage.
- Remove barbecue from bench and remove rear inspection cover.
- Check all electrical connections and tighten nuts, especially the element connections.
- Reinstall barbecue in the bench and run through a test cycle.
- Test RCBO C-Curve type A for correct operation.
- Greenplate recommend that the thermostat or temperature module is set to 320°C for faster turnaround and greater cooking satisfaction.

#### Please Note:

- All electrical works or inspections are to be carried out by Qualified Personnel Only. Routinely inspect and test all power leads as per regulations.

# 5 DIAGNOSTICS & WIRING DIAGRAM

## Inbench Electric BBQ Power Up Codes

5.1

The Greenplate AC Inbench Electric BBQ will beep either once or twice when power is applied to the unit to indicate which operational mode it is in due to the positions of the Dipswitches located on the BBQ printed circuit board (PCB).

ONE BEEP	THERMOCOUPLE MODE
----------	-------------------

TWO BEEPS	THERMOSTAT MODE
-----------	-----------------

## Inbench Electric BBQ Faults and Diagnosis

5.2

Greenplate have designed the AC Inbench Electric BBQ with inbuilt flash codes that display on the Push Button Switch when a fault is occurring.

### No Lights on Switch BBQ Not Starting:

#### *No Power to the BBQ*

- Check power is applied to the unit.

#### *Push Button Switch Failure*

- Bridge the Blue and the Black wire on the back of the switch wait for One beep and a red light on the Switch indicating the BBQ has started cycle. If you hear a Beep and there are no lights on the switch, this means the LEDs on the switch have failed.

### Dull RED or GREEN Light on Switch BBQ Not Starting:

#### *Switch Plugged in Incorrectly to the BBQ*

- Check the aviation socket is correctly plugged into the BBQ unit, twist and gently push the connector until you feel the switch cable connector click. There is a slot that must line up between the socket on the BBQ and switch connector for the switch to be correctly installed.

### Two Audible Beeps and Fast RED Flash on Switch:

#### *Under or Over Voltage Supply*

- BBQ is in protection mode and will not operate until it is within the operational parameters of <200 VAC or >275VAC. Press Switch to reset BBQ.

## Continuous Beeping and Slow GREEN Flash on Switch:

### *Frequency Error*

- Check that the BBQ Power lead is correctly plugged in to the GPO and not creating a loose connection. BBQ Could not determine between 50Hz or 60hz.

## One Audible Beep and Slow RED Flash on Switch:

### *Blown 15amp Fast Blow Fuse*

- Make sure the BBQ is turned off and check to see if the fuse is allowing power through.

### *Element Sensor Wire is Disconnected from PCB or is Incorrectly Plugged in*

- Check to see if the White (+)/Black (-) Wires are correct from the Element terminals to the H+ and H- terminals on the PCB.

### *Transformer Failure*

- Check continuity using a multi-meter between the active and neutral input of the transformer and output active and neutral of the transformer. The active and neutral input should have continuity and the output active and neutral should have continuity. If no continuity is found internal fuse has blown.
- Check power output while BBQ is operational approximately 26VAC.

### *PCB Failure*

- Check continuity between the neutral input and output of the PCB. If these two points are connected it means that the BBQ will be running continuously. Switch off power and replace PCB.

## Two Audible Beeps and Fast GREEN Flash on Switch:

### *Thermostat Disconnected or Faulty*

- Check the Thermostat sensor wires are connected from the Thermostat to the T- and T+ connectors on the PCB.
- Check the operation of the thermostat when the BBQ is cold by listening to the click. It should make a clicking sound at 50°C.
- Check Dipswitch settings are correct for Thermostat operation.

## One Audible Beep and Slow RED/GREEN Flash on Switch:

### *Thermocouple Disconnected or Faulty*

- Check that the K-Type Thermocouple is correctly plugged in to the PCB.
- Test the K-Type Thermocouple by using a multi-meter to check if there is continuity between the probe and one of the terminals, if so, the thermocouple is faulty.
- Check Dipswitch Settings are correct for Thermocouple mode operation.

Two Audible Beeps and Fast RED/GREEN Flash on Switch:

*Temperature Module Disconnected or Faulty*

- Check to see if the Temperature Module cable has been disconnected from the BBQ PCB or the internal Temperature Module PCB.
- Check Dipswitch Settings are correct for Thermocouple mode operation.

If you are continuing to experience issues with your Greenplate Inbench BBQ unit please call the Greenplate service line in Australia on 07 3245 3008 Outside Australia +617 3245 3008.

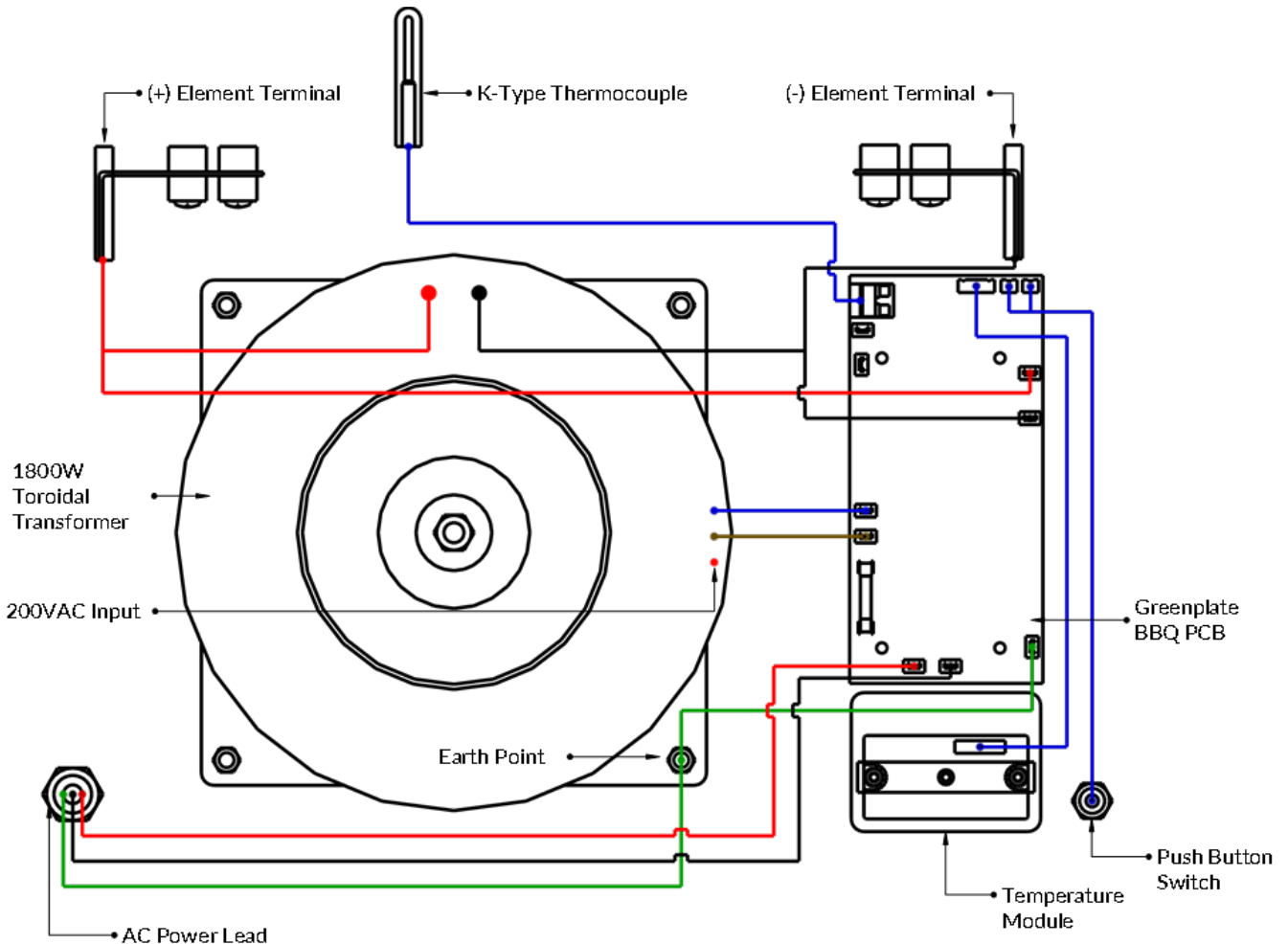
Greenplate have an extensive range of maintenance videos that explain the process of changing all parts within the AC Inbench Electric BBQ. These videos are available on our website.

<https://greenplate.com.au/support/#videos>

Please Note:

- All electrical works or inspections are to be carried out by Qualified Personnel Only. Routinely inspect and test all power leads as per regulations.

Inbench Electric BBQ Wiring Diagram



# 6 WARRANTY & QA CHECKLIST

## Warranty Policy Statement

6.1

### Specific Component Warranty Periods:

- Greenplate warrants all component parts for a period of twenty-four (24) months from the date of purchase from Greenplate's factory. Our warranty covers labour charges for parts replacement for a period of twenty-four (24) months from the date of purchase.*
- Greenplate will warrant the Element for five (5) years from the date of purchase. This warranty will also cover labour charges incurred in replacing the Element for a twenty-four (24) month period from the date of purchase.*
- Greenplate provides a lifetime limited structural warranty on all Stainless Steel Inbench Electric BBQ's.*

Greenplate Pty Ltd warranty does not cover mileage, travelling time or any after hours charges or costs, unless prior arrangements have been approved in writing. For all warranty claims outside of Australia and New Zealand please contact your sales agent directly.

## Procedure to Initiate Warranty

6.2

### Warranty Claim Information Required:

- Advise Greenplate Pty Ltd of the suspected problem, location and serial number.*
- Obtain an Official Order Number from Greenplate Pty Ltd.*
- Any parts required will be forwarded to you on a Greenplate Pty Ltd invoice.*
- The faulty parts are to be returned to Greenplate Pty Ltd within 14 days. Stating the problem, serial number, location and purchase details.*
- A credit or replacement will be issued upon the receipt of faulty parts.*

### Labour Charge Warranty Procedure:

- Contact Greenplate and provide a quotation for the works to be carried out.*
- Obtain approval from Greenplate for the works to be carried out by the nominated person or company.*
- Provide an invoice to Greenplate upon completion of repair.*
- Greenplate will arrange payments to be made.*

### Please Note:

All electrical works and repairs are to be carried out by Qualified Personnel Only. **Warranty void by unauthorized repairs.**

Greenplate Inbench Electric BBQ:

ITEM - (This carton consists of the following items.)	QTY	TICK
Greenplate Inbench Electric BBQ Unit	1	
Plastic drain collection bucket	1	
Heat proof bucket liners	5	
Push button remote switch assembly (1.2 meters)	1	
Instruction label	1	
Red silicone rubber washer	1	
30mm x 275mm threaded drain pipe with 25mm washer attached	1	
Quick release hold down bracket	1	
30mm stainless steel bracket washer	1	
30 mm brass locking nut	1	
Product Manual Including QA Checklist, Important Installation Requirements, Service Instructions, Warranty and Other Important information.	1	

SERIAL NUMBER:		TEST:	
CHECKED BY:		DATE:	